

# Arecont Vision SurroundVideo®

AV8180

AV8360

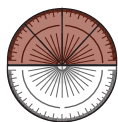
Panoramic 8 Megapixel IP Video



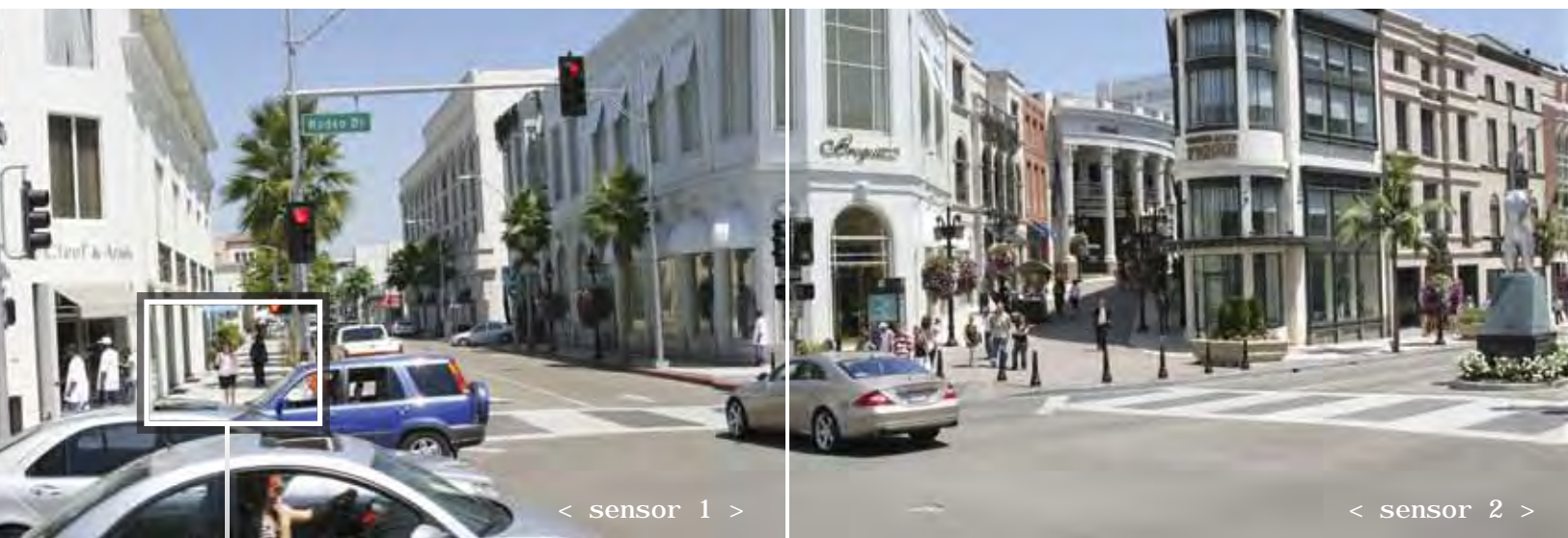
SurroundVideo® cameras  
have 24 times the resolution  
of analog cameras and offer  
dramatically lower cost per  
area under surveillance.



# AV8180



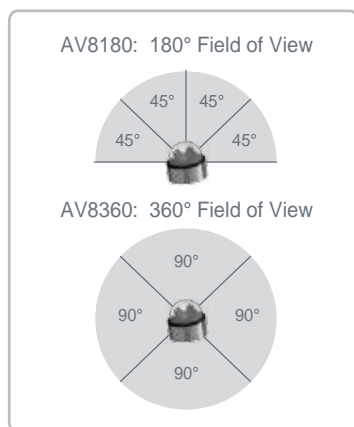
180° Field of View | High Definition | 8 Megapixel Camera



180° SurroundVideo® camera images with selectable Region of Interest (ROI) zones for optimized bandwidth



Real-time, high definition digital video surveillance with 24x the resolution of analog surveillance cameras.



Ultra-compact design incorporates four 2 megapixel sensors for full 180° or 360° coverage.

Unique SurroundVideo® 8-megapixel network cameras deliver full motion 180° or 360° panoramas. Compact 6" dome design incorporates four 2 megapixel sensors, dramatically reducing total installation cost.

## HIGH RESOLUTION & FULL MOTION

AV8180 and AV8360 network cameras leverage proprietary massively-parallel image processing technologies SurroundVideo® and MegaVideo® and deliver full motion, progressive scan panoramic video over four 1600x1200 channels at 22 fps.

## COST EFFICIENCY

High resolution and crystal clear imagery allow a single SurroundVideo® camera to replace up to 24 analog cameras, substantially reducing the total cost of installation. Compact 6" dome has a single external cable that carries both power and video using Power-over-Ethernet (POE) technology.

## NO- MOVING-PARTS INSTANTENEOUS 180° OR 360° PAN TILT ZOOM (PTZ)

Super high resolution of AV8360 and AV8180 allows efficient no-moving-parts zoom windows to be instantly re-positioned across the entire panorama. These zoom windows are delivered as separate video streams simultaneously with the complete full field of view panoramic video, thus eliminating the trade-off between magnification and area coverage as well as avoiding costly and unreliable electro-mechanical PTZ.

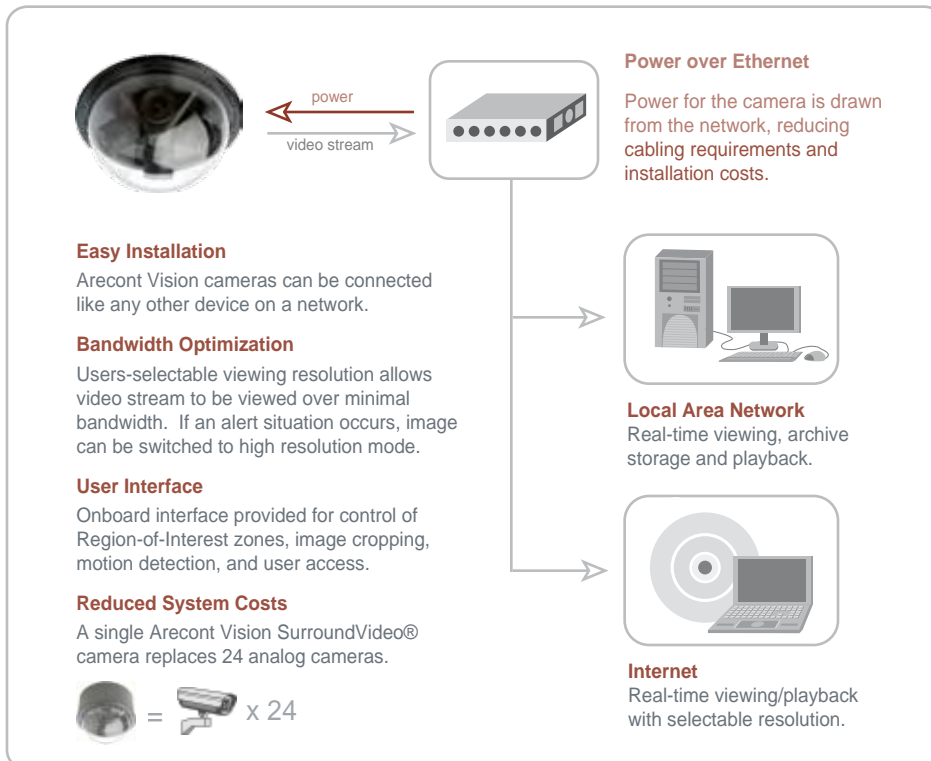
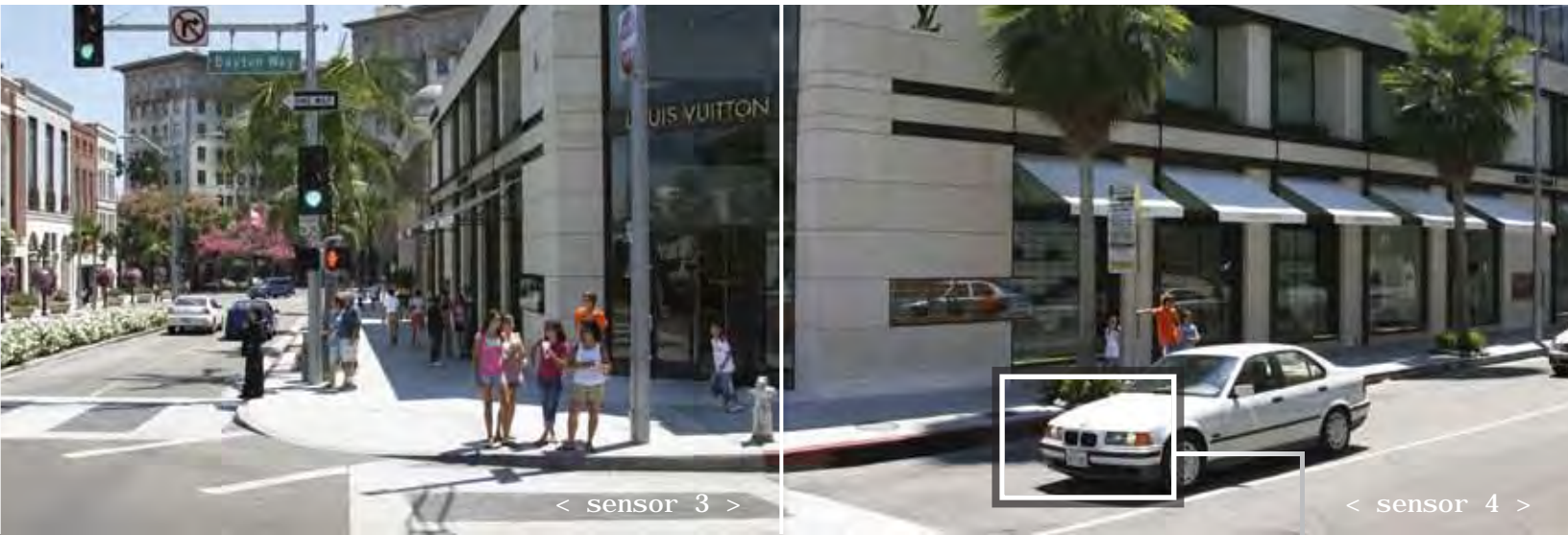
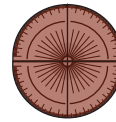
## FORENSIC ZOOMING

Playback of high-resolution digital archives allows "zoom-after-event" on any object in the field of view, eliminating the need for manned installations.

## EFFICIENT BANDWIDTH MANAGEMENT

Efficient bandwidth utilization is supported via user-selectable regions of interest (ROI). The reduction of overall storage and bandwidth requirements may be achieved by selecting up to 4 regions of interest with independent control of resolution and compression quality for each of the selected regions.



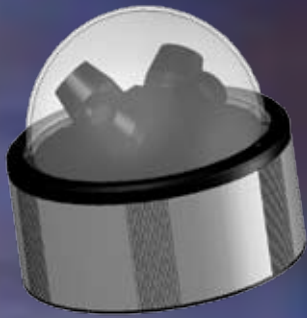


The user can simultaneously view both full field-of-view and multiple regions of interest.

User selectable Region of Interest (ROI) allows users to set the resolution of defined zones in a video stream, reducing image size and required bandwidth.



360° SurroundVideo® camera images with selectable Region of Interest (ROI) zones for optimized bandwidth



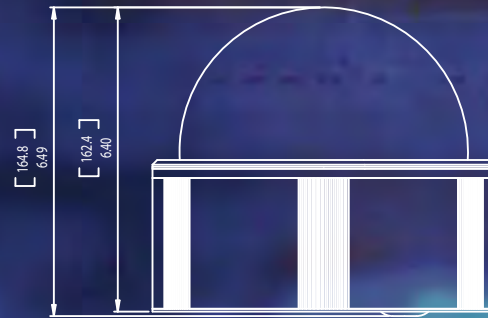
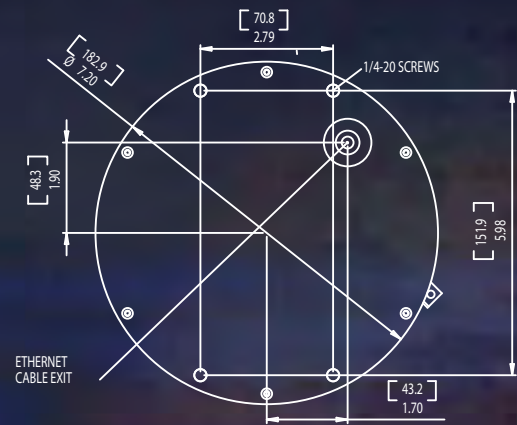
AV8360



AV8180

*Arecont Vision manufactures the world's fastest HDTV network cameras in discreet, low profile 6" dome designs.*

*The SurroundVideo® AV8180 and AV8360 panoramic cameras deliver full motion HDTV resolution at NTSC prices.*



## Imaging

Four 2 megapixel CMOS image sensors  
1600(H) x 1200(V) pixel array each sensor  
1/2" optical format  
Sensitivity 0.2 lux @ F2.0  
Moonlight™ Mode - extended exposure and proprietary noise cancellation

## Data Transmission

Data rate up to 55Mbps  
Video frame rate (all four channels in parallel):  
88 fps @ 800 x 600 or 22 fps @ 1600 x 1200  
Motion JPEG with 21 levels of quality  
100Base-T Ethernet network interface

## Programmability (independent for each channel)

Auto exposure (AE) and gain control (AGC) >120dB  
Auto backlight compensation  
Auto multi-matrix white balance  
50/60Hz selectable flicker control  
Electronic pan, tilt, zoom (PTZ)  
Electronic image rotation - up-side down image turn  
Programmable motion blurring control for low-light mode  
Pictures-in-picture: simultaneous delivery of full field of view and zoomed images

## Electrical

Power over Ethernet (POE) IEEE 802.3af or DC Input  
Power consumption 6 watts maximum

## Regulatory Approvals

FCC and CE compliant

## Mechanical/ Environmental

4lb or 1.8 Kg  
Operating Temperature 0°C to +50°C



Arecont Vision SurroundVideo® camera installed in outdoor heater/blower enclosure.



View of AV8360 camera showing four 2 megapixel camera channels.

*Note: Arecont Vision reserves the right to change products or specifications without notice.*





**Arecont Vision**  
Megapixel IP Cameras

1.3 Mpixel IP-camera sensitive to 0.1 lux @ F 1.4

Frame Rate 30 fps @ Resolution 1,280 x 1,024

The AV1300 Series offers the same frame rate as NTSC and real time high definition digital video surveillance with 4 times the resolution of the best analog surveillance cameras.

- **HIGH RESOLUTION & FULL MOTION:** AV1300 Series network camera delivers full motion progressive scan 1280 x 1024 video at 30 fps featuring massively-parallel MegaVideo® image processing architecture capable of sustaining over 6 billion operations per second.

- **COST EFFICIENCY:** High resolution and crystal clear imagery allows the AV1300 Series to substitute up to four analog cameras; thereby reducing the total cost of installation. No need to supply a separate power source since the power can be drawn from a low cost Power-over-Ethernet switch.

- **FORENSIC ZOOMING:** AV1300 Series surveillance system has the ability to zoom in after any event from high resolutions digital archives. You can also simultaneously view zoomed and full field of view images.

- **24-HOUR SURVEILLANCE WITH DAY/NIGHT FEATURE:** The MegaVideo® single sensor Day/Night feature is especially useful where you need to capture images under highly variable lighting conditions, such as brilliant mid-day sun, and dim night. In daytime illumination, the camera operates in normal color mode providing vivid images, then automatically changes to black-and-white mode using IR cut filter removal technology when the light fades at dusk. The transition from day to night is fully programmable, or can be forced to either day or night mode.

- **ONBOARD MOTION DETECTION:** Onboard real-time motion detection with size and sensitivity controls for up to 64 separate motion detection zones.



**AV1300 SERIES**

detailmatters  
www.arecontvision.com

## Model Numbers

- AV1300M  
1.3 Megapixel Camera
- AV1300DN  
1.3 Megapixel Day/Night Camera with Automatic IR Cut Filter
- AV1300AI  
1.3 Megapixel Camera W/Auto Iris

## Imaging

- 1.3 Megapixel CMOS Image Sensor
- 1280(H) x 1024(V) Pixel Array
- 1/2" Optical Format
- 4.2  $\mu$ m Pixel Pitch
- Bayer Mosaic RGB Filter
- Sensitivity 0.1 lux @ F1.4
- Dynamic Range 60 dB
- Maximum SNR 45 dB

## Data Transmission

- Data Rate up to 55Mbps
- Video Frame Rate up to:  
- 30 fps @ 1280x1024
- Motion JPEG with 20 Levels of Quality
- TFTP and HTTP Image Transmission Protocols
- 100Base-T Ethernet Network Interface

## Programmability

- Auto Exposure (AE) and Gain Control (AGC) >120dB
- On-Camera Motion Detection with 64 Detection Zones
- Auto Backlight Compensation
- Auto Multi-Matrix White Balance
- 50/60Hz Selectable Flicker Control
- Electronic Pan, Tilt, Zoom (PTZ)
- Electronic Image Rotation - Up-Side Down Image Turn
- Resolution Windowing Down to 32x32 Pixels Window
- Programmable Motion Blurring Control for Low-Light Mode
- MoonLight™ Mode - Extended Exposure and Proprietary Noise Cancellation
- Programmable Resolution, Brightness, Saturation, Gamma, Sharpness, Tint
- Picture-in-Picture: Simultaneous Delivery of Full Field of View and Zoomed Images
- Bandwidth & Storage Savings by Running at 1/4 resolution

## Electrical

- Opto-coupled Alarm Input, Opto-Coupled Alarm and Flash Sync Output
- Power Over Ethernet (PoE) or DC Input
- PoE 802.3af/auxiliary 12V-48V DC
- Power Consumption 3 Watts Maximum
- Optional DC AI Connection

## Regulatory Approvals

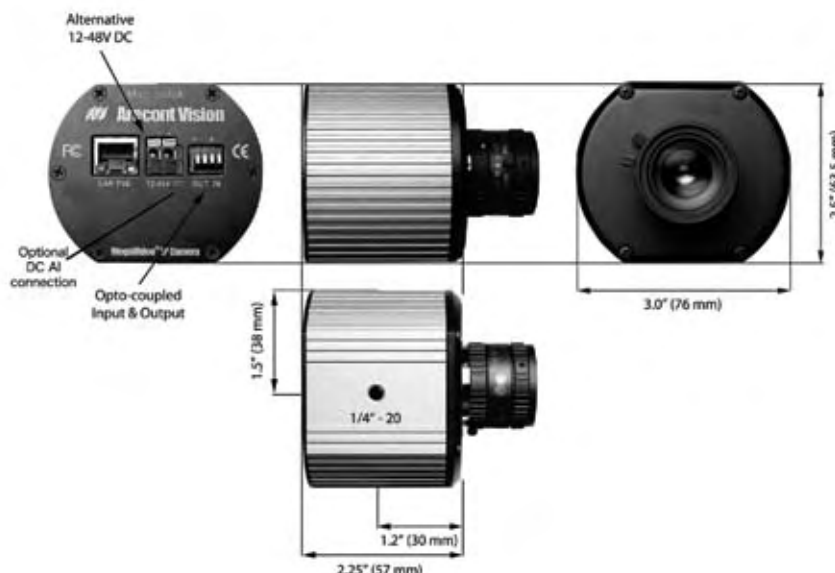
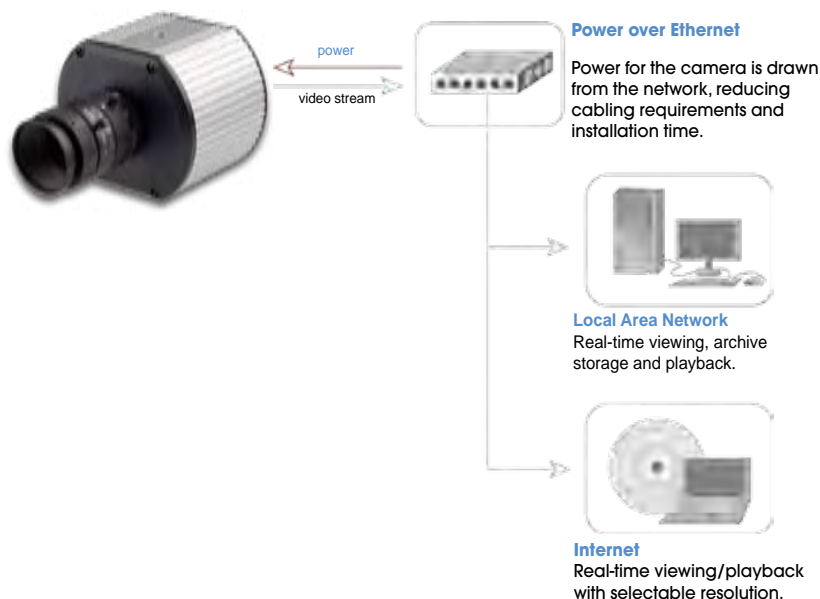
- FCC and CE compliant

## Mechanical

- 3"Wx2.5"Hx2.25"D (w/o lens)
- 8.6 oz or 243 grams (w/o lens)
- C/CS Lens Mount

## Environmental

- Operating Temperature 0°C to +50°C
- Storage Temperature -20°C to +60°C
- Humidity 0% to 90% (Non Condensing)





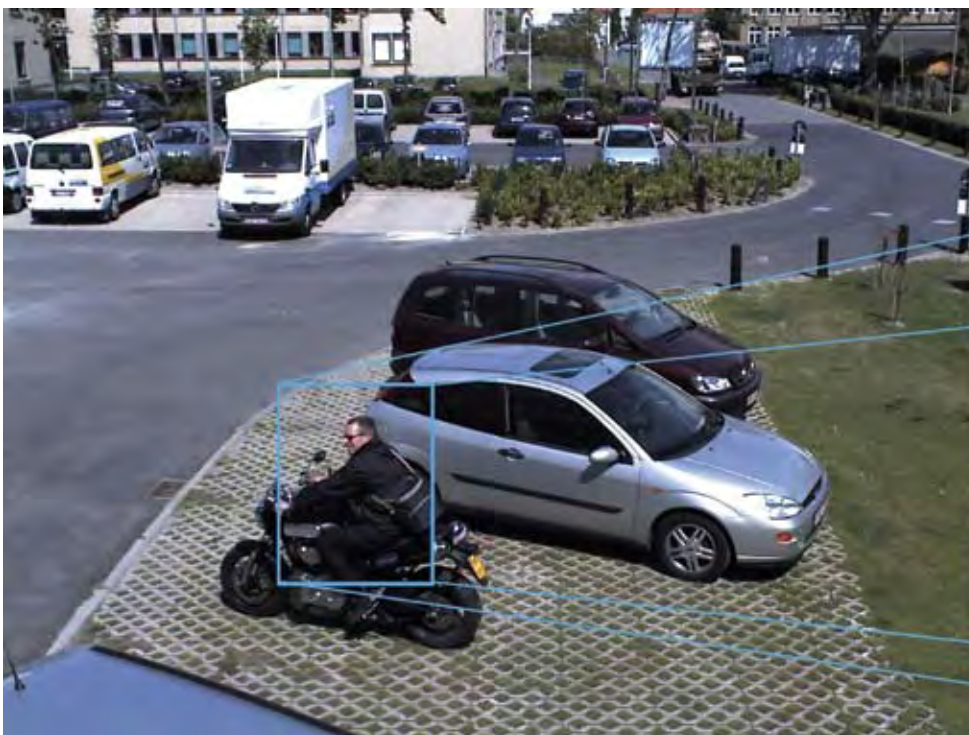


**Arecont Vision**  
Megapixel IP Cameras

2 Mpixel IP-camera sensitive to 0.1 lux @ F 1.4  
Frame Rate 24 fps @ Resolution 1,600 x 1,200

The AV2100 Series offers cinema compatible high frame rates to allow real time high definition digital video surveillance with 6 times the resolution of the best analog surveillance cameras.

- **GREAT HIGH RESOLUTION & FULL MOTION:** AV2100 Series network camera delivers full motion progressive scan 1600 x 1200 video at 24 fps featuring massively-parallel MegaVideo® image processing architecture capable of sustaining over 6 billion operations per second.
- **GREAT COST EFFICIENCY:** High resolution and crystal clear imagery allows the AV2100 Series to substitute up to six analog cameras; thereby reducing the total cost of installation. No need to supply a separate power source since the power can be drawn from a low cost Power-over-Ethernet switch.
- **GREAT FORENSIC ZOOMING:** AV2100 Series provides the ability to zoom in after any event from high resolutions digital archives. You can also simultaneously view zoomed and full field of view images.
- **24-HOUR SURVEILLANCE WITH DAY/NIGHT FEATURE:** The MegaVideo® single sensor Day/Night feature is especially useful where you need to capture images under highly variable lighting conditions - such as brilliant mid-day sun, and dim night. In daytime illumination, the camera operates in normal color mode providing vivid images, then automatically changes to black-and-white mode using IR cut filter removal technology when the light fades at dusk. The transition from day to night is fully programmable, or can be forced to either day or night mode.
- **ONBOARD MOTION DETECTION:** Onboard real-time motion detection with size and sensitivity controls for up to 64 separate motion detection zones.



**daynight**  
MegaVideo® Technology Delivers Full Motion  
HDTV Resolution at NTSC Price



**AV2100 SERIES**

detailmatters  
www.arecontvision.com

# Specifications

## Model Numbers

- AV2100M  
2 Megapixel Camera
- AV2100DN  
2 Megapixel Day/Night Camera with Automatic IR Cut Filter
- AV2100AI  
2 Megapixel Camera w/Auto Iris

## Imaging

- 2Megapixel CMOS Image Sensor
- 1600(H) x 1200(V) Pixel Array
- 1/2" Optical Format
- 4.2  $\mu$ m Pixel Pitch
- Bayer Mosaic RGB Filter
- Sensitivity 0.1 lux @ F1.4
- Dynamic Range 60 dB
- Maximum SNR 41 dB

## Data Transmission

- Data Rate up to 55Mbps
- Video Frame Rate up to:
  - 24 fps @ 1600x1200
  - 30 fps @ 1280x1024
- Motion JPEG with 20 Levels of Quality
- TFTP and HTTP Image Transmission Protocols
- 100Base-T Ethernet Network Interface

## Programmability

- Auto Exposure (AE) and Gain Control (AGC) >120dB
- On-Camera Motion Detection With 64 Detection Zones
- Auto Backlight Compensation
- Auto Multi-Matrix White Balance
- 50/60Hz Selectable Flicker Control
- Electronic Pan, Tilt, Zoom (PTZ)
- Electronic Image Rotation - Up-Side Down image Turn
- Resolution Windowing Down to 32x32 Pixels Window
- Programmable Motion Blurring Control for Low-Light Mode
- MoonLight™ Mode - Extended Exposure and Proprietary Noise Cancellation
- Programmable Resolution, Brightness, Saturation, Gamma, Sharpness, Tint
- Picture-in-Picture: Simultaneous Delivery of Full Field of View and Zoomed Images
- Bandwidth & Storage Savings by Running at 1/4 resolution

## Electrical

- Opto-Coupled Alarm Input, Opto-Coupled Alarm and Flash Sync Output
- Power over Ethernet (PoE) or DC Input
- PoE 802.3af/auxiliary 12V-48V DC
- Power Consumption 3 Watts Maximum
- Optional DC AI Connection

## Regulatory Approvals

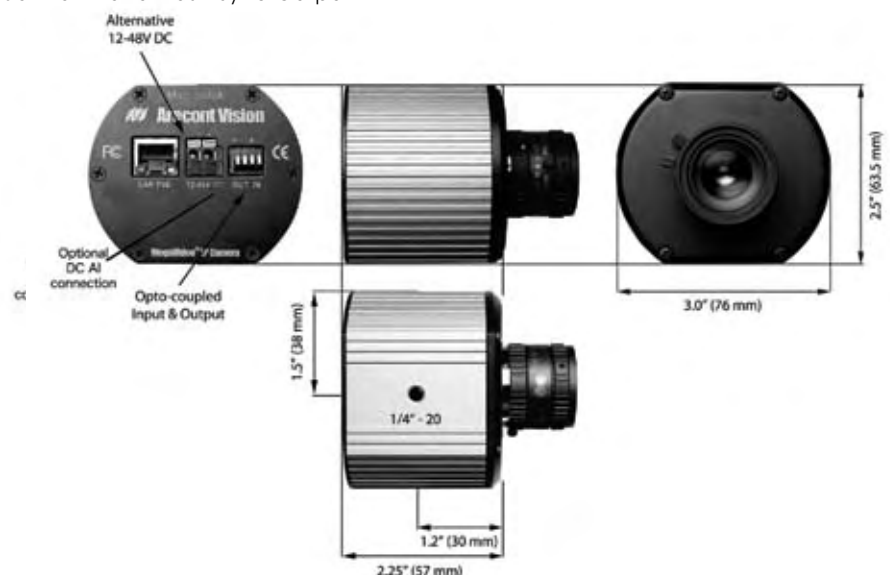
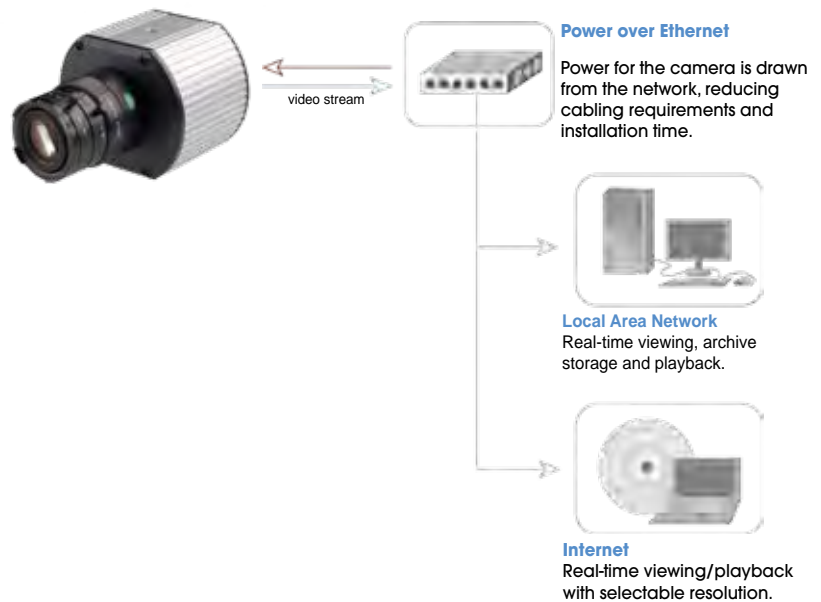
- FCC and CE Compliant

## Mechanical

- 3"Wx2.5"Hx2.25"D (w/o lens)
- 8.6 oz or 243 grams (w/o lens)
- C/CS Lens Mount

## Environmental

- Operating Temperature 0°C to +50°C
- Storage Temperature -20°C to +60°C
- Humidity 0% to 90% (non condensing)







# Arecont Vision

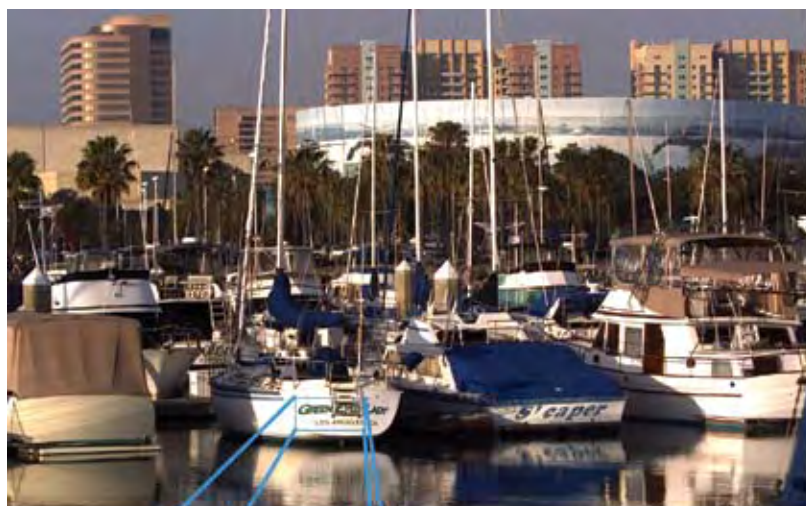
Megapixel IP Cameras

Sensitivity from 0.01 lux to 100,000 lux

Frame Rate 20 fps @ Resolution 1,920 x 1,200

Multi-sensor DayNight™ AV3130M leverages proprietary patent-pending technology and alleviates the cost and sensitivity shortcomings associated with multi-megapixel video surveillance.

- **SUPERB HIGH RESOLUTION & FULL MOTION:** AV3130M network camera delivers full motion progressive scan 1920 x 1200 video at 20 fps featuring massively-parallel MegaVideo® image processing architecture capable of sustaining over 6 billion operations per second.
- **SUPERB ILLUMINATION RANGE & SENSITIVITY:** While sophisticated conventional cameras improve low-light sensitivity by mechanically removing the IR filter, the AV3130M uses DualBand™ technology that seamlessly switches to optimized monochrome sensor in low light. Sensitivity drop-off due to color filters and small pixels and accommodating 10,000,000:1 range of scene illuminations this eliminates from bright sunlight to cloudy moonlight.
- **SUPERB SYSTEM RELIABILITY & FUNCTIONALITY:** AV3130M has no moving mechanical parts and is complemented by state-of-the-art surveillance software capable of live image acquisition and display from multiple cameras, policy-based digital archiving and video redistribution across local and wide area networks.
- **SUPERB COST EFFICIENCY:** High resolution and crystal clear imagery allows the AV3130M to substitute up to ten analog cameras; thereby reducing the total cost of installation. No need to supply a separate power source since the power can be drawn from a low cost Power-over-Ethernet switch.
- **ONBOARD MOTION DETECTION:** Onboard real-time motion detection with size and sensitivity controls for up to 64 separate motion detection zones.



AV3130M

detailmatters  
www.arecontvision.com

## Model Numbers

- AV3130M  
Dualband™  
3/1.3 Megapixel Camera

## Imaging

- 3 Mpixel Color 2048(H) x 1536(V)
- 1.3 Mpixel Monochrome 1280(H) x 1024(V)
- 1/2" CMOS Optical Format Each
- Bayer Mosaic RGB Filter
- Sensitivity 0.01 lux @ F1.4
- Dynamic Range 60 dB
- Maximum SNR 45 dB

## Data Transmission

- Data Rate up to 55Mbps
- Video Frame Rate up to:
  - 15 fps @ 2048x1536
  - 20 fps @ 1920x1200
  - 30 fps @ 1280x1024
- Motion JPEG with 20 Levels of Quality
- TFTP & HTTP Image Transmission Protocols
- 100Base-T Ethernet Network Interface

## Programmability

- Auto Day-Night Switch from Monochrome to Color
- Auto Exposure (AE) and Gain Control (AGC) >120dB
- On Camera Motion Detection with 64 Detection Zones
- Auto Backlight Compensation
- Auto Multi-Matrix White Balance
- 50/60Hz Selectable Flicker Control
- Electronic Pan, Tilt, Zoom (PTZ)
- Electronic Image Rotation - Up-Side down Image Turn
- Resolution Windowing Down to 32x32 Pixels Window
- Programmable Motion Blurring Control for Low-Light Mode
- Programmable Resolution, Brightness, Saturation, Gamma, Sharpness, Tint
- Pictures-In-Picture: Simultaneous Delivery of Full Field of View and Zoomed
- Bandwidth & Storage Savings by Running at 1/4 resolution

## Electrical

- Opto-Coupled Alarm Input, Opto-Coupled Alarm and Flash Sync Output
- Power Over Ethernet (PoE) or DC Input
- PoE 802.3af/Auxiliary 12V-48V DC
- Power Consumption 3.5 Watts Maximum

## Regulatory Approvals

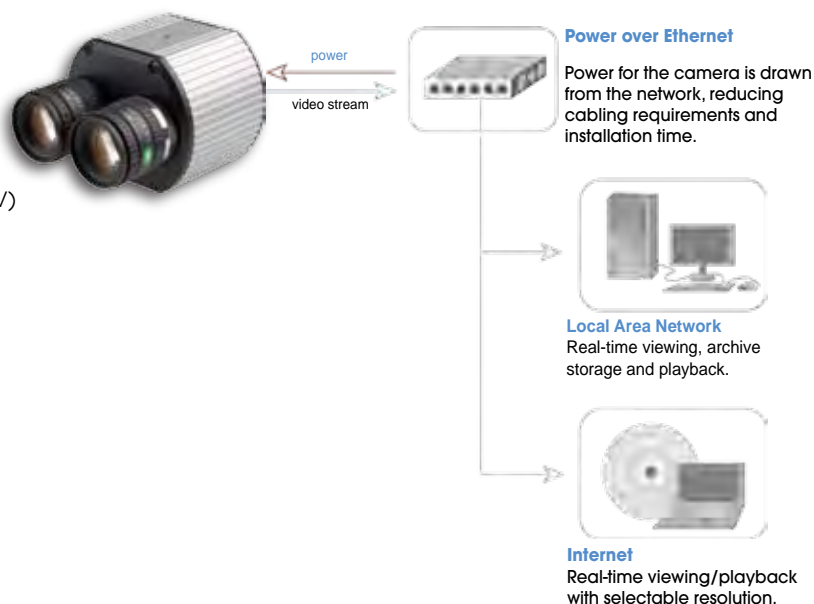
- FCC and CE compliant

## Mechanical

- 3"Wx2.5"Hx2.25"D (w/o lens)
- 8.6 oz or 243 grams (w/o lens)
- Dual C/CS Lens Mount

## Environmental

- Operating Temperature 0°C to +50°C
- Storage Temperature -20°C to +60°C
- Humidity 0% to 90% (non condensing)





3 Mpixel IP-camera sensitive to 0.2 lux @ F 1.4

Frame Rate 22 fps @ Resolution 1,920 x 1,080

The AV3100 Series offers cinema compatible frame rates to allow real time high definition digital video surveillance with 10 times the resolution of the best analog surveillance cameras.

- **SUPERB HIGH RESOLUTION & FULL MOTION:** AV3100 Series network camera delivers full motion progressive scan 1920 x 1080 video at 22 fps featuring massively-parallel MegaVideo® image processing architecture capable of sustaining over 6 billion operations per second.
- **SUPERB COST EFFICIENCY:** High resolution and crystal clear imagery allows the AV3100 Series to substitute up to ten analog cameras; thereby reducing the total cost of installation. No need to supply a separate power source since the power can be drawn from a low cost Power-over-Ethernet switch.
- **SUPERB FORENSIC ZOOMING:** AV3100 Series surveillance system has the ability to zoom in after any event from high resolutions digital archives. You can also simultaneously view zoomed and full field of view images.
- **24-HOUR SURVEILLANCE WITH DAY/NIGHT FEATURE:** The MegaVideo® single sensor Day/Night feature is especially useful where you need to capture images under highly variable lighting conditions, such as brilliant mid-day sun, and dim night. In daytime illumination, the camera operates in normal color mode providing vivid images, then automatically changes to black-and-white mode using IR cut filter removal technology when the light fades at dusk. The transition from day to night is fully programmable, or can be forced to either day or night mode.
- **ONBOARD MOTION DETECTION:** Onboard real-time motion detection with size and sensitivity controls for up to 64 separate motion detection zones.





## Model Numbers

- AV3100M  
3 Megapixel camera
- AV3100DN  
3 Megapixel Day/Night camera with automatic IR cut Filter
- AV3100AI  
3 Megapixel Camera w/Auto Iris

## Imaging

- 3 Megapixel CMOS Image Sensor
- 2048(H) x 1536(V) pixel array
- 1/2" Optical format
- 3.2  $\mu$ m pixel pitch
- Bayer mosaic RGB filter
- Sensitivity 0.2 lux @ F1.4
- Dynamic Range 60 dB
- Maximum SNR 41 dB

## Data Transmission

- Data Rate up to 55Mbps
- Video Frame Rate up to:
  - 15 fps @ 2048x1536
  - 22 fps @ 1920x1200
  - 30 fps @ 1280x1024
- Motion JPEG with 20 Levels of Quality
- TFTP and HTTP Image Transmission Protocols
- 100Base-T Ethernet Network Interface

## Programmability

- Auto Exposure (AE) and Gain Control (AGC) >120dB
- On-Camera Motion Detection with 64 Detection zones
- Auto Backlight Compensation
- Auto Multi-Matrix White Balance
- 50/60Hz selectable Flicker Control
- Electronic Pan, Tilt, Zoom (PTZ)
- Electronic Image Rotation - Up-Side Down Image Turn
- Resolution Windowing Down to 32x32 Pixels Window
- Programmable Motion Blurring Control for Low-Light Mode
- MoonLight™ Mode - Extended Exposure and Proprietary Noise Cancellation
- Programmable Resolution, Brightness, Saturation, Gamma, Sharpness, Tint
- Picture-in-Picture: Simultaneous Delivery of Full Field of View and Zoomed Images
- Bandwidth & Storage Savings by Running at 1/4 resolution

## Electrical

- Opto-Coupled Alarm Input, Opto-Coupled Alarm and Flash Sync Output
- Power Over Ethernet (PoE) or DC Input
- PoE 802.3af/Auxiliary 12V-48V DC
- Power Consumption 3 Watts Maximum
- Optional DC AI Connection

## Regulatory Approvals

- FCC and CE compliant

## Mechanical

- 3"Wx2.5"Hx2.25"D (w/o lens)
- 8.6 oz or 243 grams (w/o lens)
- C/CS Lens Mount

## Environmental

- Operating Temperature 0°C to +50°C
- Storage Temperature -20°C to +60°C
- Humidity 0% to 90% (non condensing)



power  
video stream



### Power over Ethernet

Power for the camera is drawn from the network, reducing cabling requirements and installation time.



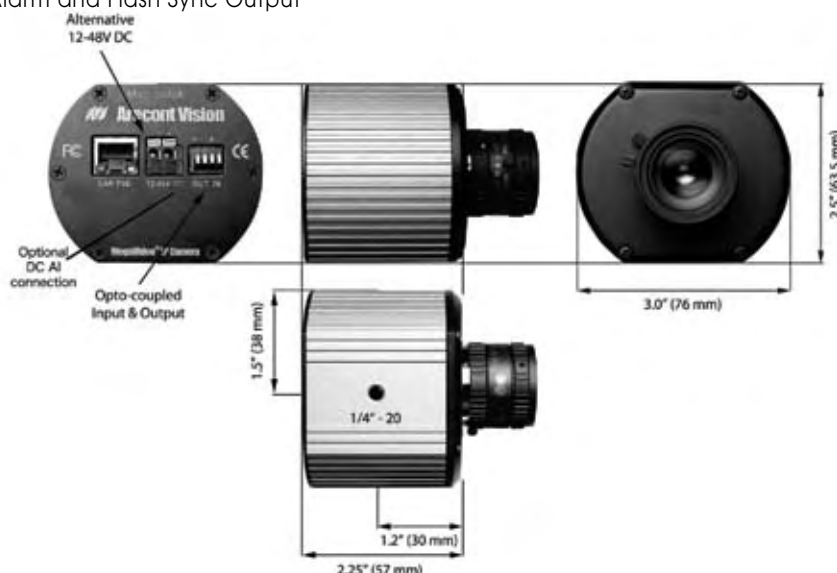
### Local Area Network

Real-time viewing, archive storage and playback.



### Internet

Real-time viewing/playback with selectable resolution.





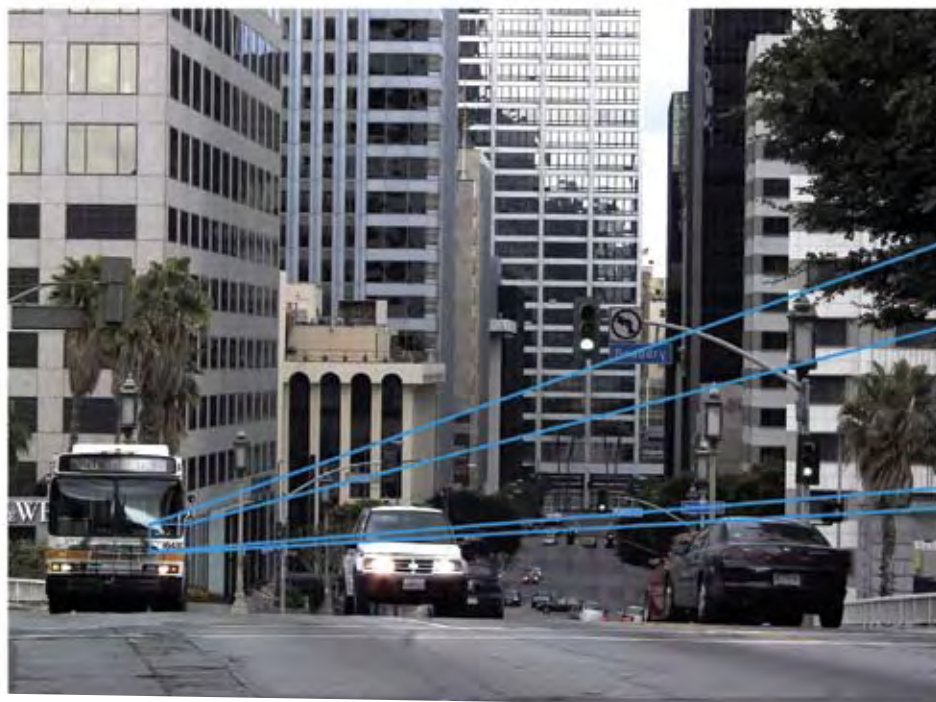
**Arecont Vision**  
Megapixel IP Cameras

5 Mpixel IP-camera sensitive to 0.3 lux @ F 1.4

Frame Rate 12 fps @ Resolution 2,560 x 1,600

The AV5100 Series offers cinema compatible frame rates to allow real time high definition digital video surveillance with 15 times the resolution of the best analog surveillance cameras.

- **ULTRA HIGH RESOLUTION & FULL MOTION:** AV5100 Series network camera delivers full motion progressive scan 2560 x 1600 video at 12 fps featuring massively-parallel MegaVideo® image processing architecture capable of sustaining over 6 billion operations per second.
- **ULTRA COST EFFICIENCY:** High resolution and crystal clear imagery allows the AV5100 Series to substitute up to fifteen analog cameras; thereby reducing the total cost of installation. No need to supply a separate power source since the power can be drawn from a low cost Power-over-Ethernet switch.
- **ULTRA FORENSIC ZOOMING:** AV5100 Series surveillance system has the ability to zoom after the event from high resolution digital archives. You can also simultaneously view zoomed and full field of view images.
- **24-HOUR SURVEILLANCE WITH DAY/NIGHT FEATURE:** The MegaVideo® single sensor Day/Night feature is especially useful where you need to capture images under highly variable lighting conditions, such as brilliant mid-day sun, and dim night. In daytime illumination, the camera operates in normal color mode providing vivid images, then automatically changes to black-and-white mode using IR cut filter removal technology when the light fades at dusk. The transition from day to night is fully programmable, or can be forced to either day or night mode.
- **ONBOARD MOTION DETECTION:** Onboard real-time motion detection with size and sensitivity controls for up to 64 separate motion detection zones.



**AV5100 SERIES**

detailmatters  
www.arecontvision.com

## Model Numbers

- AV5100M  
5 Megapixel Camera
- AV5100DN  
5 Megapixel Day/Night camera  
with automatic IR cut Filter
- AV5100AI  
5 Megapixel Camera w/Auto iris

## Imaging

- 5 Megapixel CMOS Image Sensor
- 2592(H) x 1944(V) Pixel Array
- 1/2" Optical Format
- 2.2 µm Pixel Pitch
- Bayer Mosaic RGB Filter
- Sensitivity 0.3 lux @ F1.4
- Dynamic Range 60 dB
- Maximum SNR 41 dB

## Data Transmission

- Data Rate up to 55Mbps
- Video Frame Rate up to:
  - 8 fps @ 2592x1944
  - 15 fps @ 2560x1600
  - 30 fps @ 1280x1024
- Motion JPEG with 20 Levels of Quality
- TFTP & HTTP Image Transmission Protocols
- 100Base-T Ethernet Network Interface

## Programmability

- Auto Day-Night Switch from Monochrome to Color
- Auto Exposure (AE) and Gain Control (AGC) >120dB
- On Camera Motion Detection with 64 Detection Zones
- Auto Backlight Compensation
- Auto Multi-Matrix White Balance
- 50/60Hz selectable Flicker Control
- Electronic Pan, Tilt, Zoom (PTZ)
- Electronic Image Rotation - Up-Side Down Image Turn
- Resolution Windowing Down to 32x32 Pixels Window
- Programmable Motion Blurring Control for Low-Light Mode
- MoonLight™ Mode - Extended Exposure and Proprietary Noise Cancellation
- Programmable Resolution, Brightness, Saturation, Gamma, Sharpness, Tint
- Pictures-In-Picture: Simultaneous Delivery of Full Field of View and Images
- Bandwidth & Storage Savings by Running at 1/4 resolution

## Electrical

- Opto-Coupled Alarm Input, Opto-Coupled Alarm and Flash Sync Output
- Power Over Ethernet (PoE) or DC Input
- PoE 802.3af/Auxiliary 12V-48V DC
- Power Consumption 3 Watts Maximum
- Optional DC AI Connection

## Regulatory Approvals

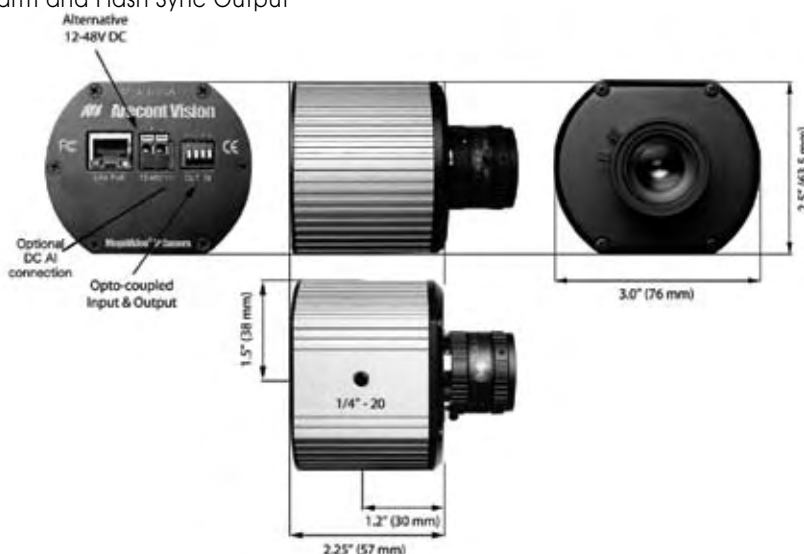
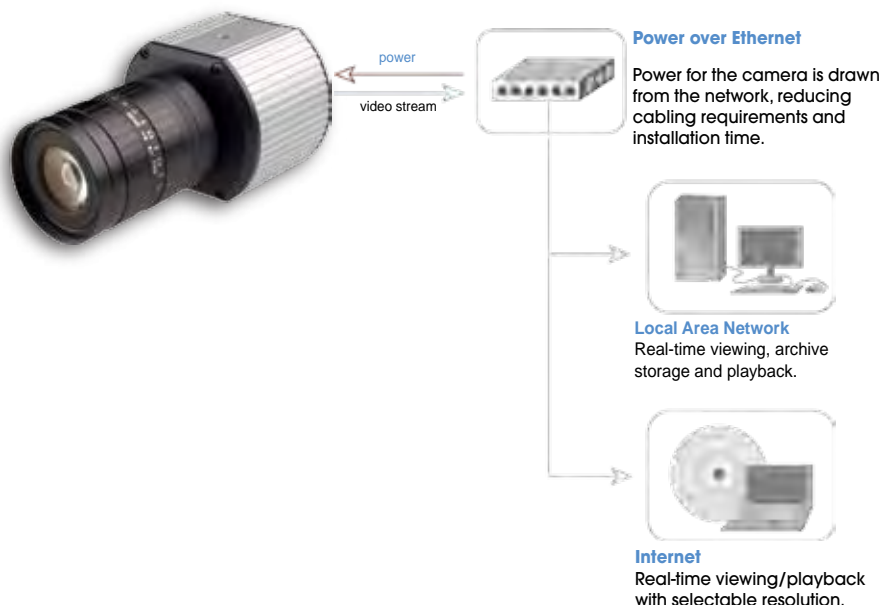
- CE compliant
- FCC Part 15, Class B

## Mechanical

- 3"Wx2.5"Hx2.25"D (w/o lens)
- 8.6 oz or 243 grams (w/o lens)
- C/CS Lens Mount

## Environmental

- Operating Temperature 0°C to +50°C
- Storage Temperature -20°C to +60°C







The Arecont Vision 4 inch dome offers excellent protection for the entire line of Arecont Vision mini megapixel cameras.

Combining this 4" dome with the superior imaging of an AV camera provides the perfect solution for environments in which cameras need to be less noticeable, or require additional protection from the elements.

- Indoor or Outdoor Applications
- Surface Mounting
- Simple Installation
- IP66 Rating
- Designed to House the Entire Line of Day/Night Megapixel Cameras
- 2 Axis Camera Positioning



**VANDAL RESISTANT :** Tough, high-impact polycarbonate construction with a heavy duty enclosure for harsh environments.

**FULL VIEW IN ALL DIRECTIONS:** Camera can be rotated a full 360° horizontally and 0-90° vertically, allowing full flexibility for either ceiling or wall mounting. Dome will ensure outstanding high resolution for the Arecont Vision line of mini megapixel cameras.

**EASY INSTALLATION:** Easy installation and superior design, perfect for indoor or outdoor applications.



## MODEL NUMBER

### Dome 4-I

Indoor/Outdoor vandal resistant dome

## MECHANICAL

### Housing material:

Aluminum

### Dome Cover Protection:

Vandal resistant polycarbonate

### Dome Cover Diameter:

4.5 inch (114.3 mm)

### Back Plate Diameter:

6.30 inch (160 mm)

### Housing Height:

4.90 inch (125 mm)

### Dome Cover Height:

2.80 inch (70 mm)

### Housing Diameter:

6.30 inch (160 mm)

### Weight w/o camera:

2.2lbs(1kg)

### Security:

Tamper proof screws

### Compatible Cameras:

AV1300M, AV1300DN,  
AV2100M, AV2100 DN,  
AV3130 M, AV3130DN,  
AV3100M, AV3100DN,  
AV5100M

## ENVIRONMENTAL

### Operating Temperature:

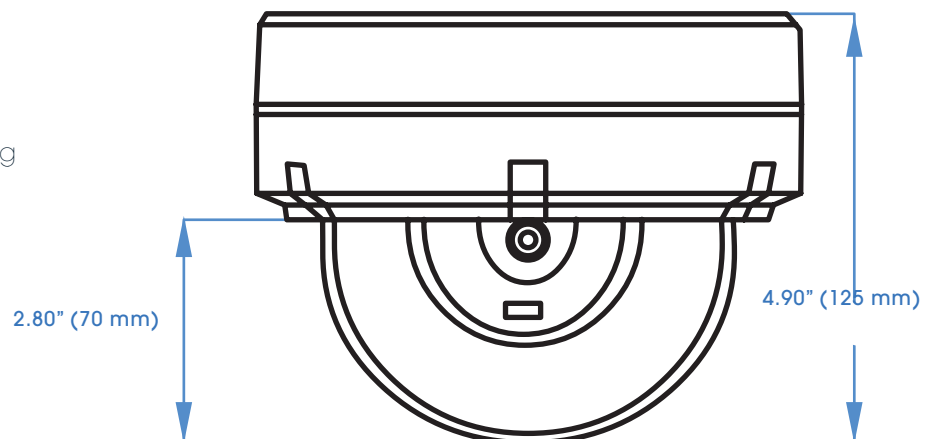
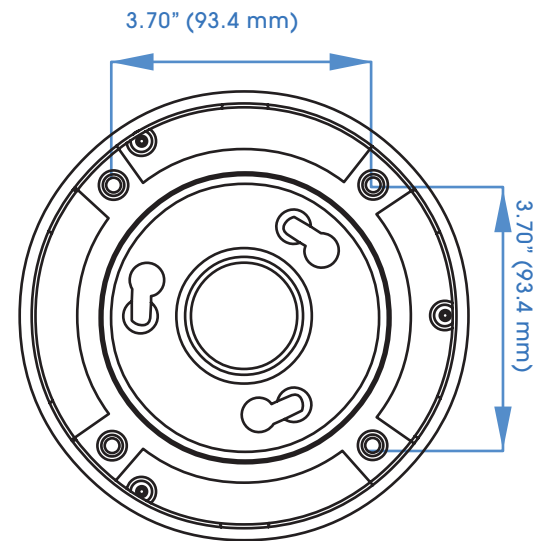
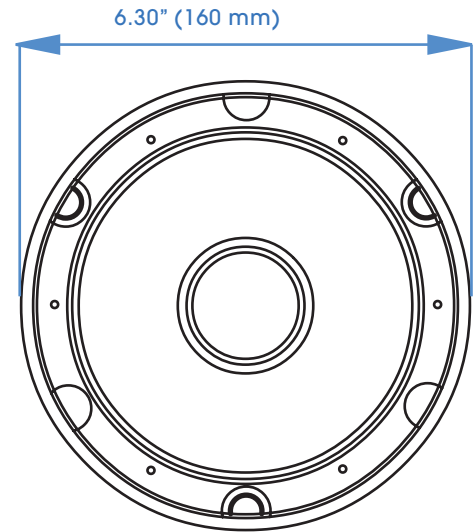
0°C to 50°C

### Humidity:

0 to 95 % relative, non-condensing

### Enclosure Protection:

IP66 Rating

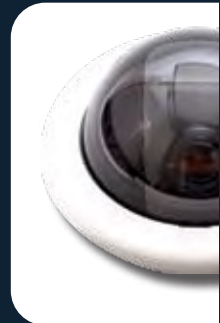
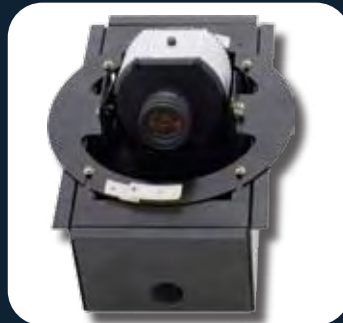




The Arecont Vision 5 inch indoor dome is designed to house the entire line of Arecont Vision cameras.

Combining this 5" recessed dome with the superior imaging of an AV camera provides the perfect solution for applications in which cameras need to be less noticeable.

- Indoor Applications
- Recessed Mounting
- Simple Installation
- Easy Access to Camera
- 3 Axis Mount for Precise Camera Adjustment
- Designed to House the Entire Line of Day/Night Megapixel Cameras



**EXCEPTIONAL VIEW:** Combining this dome with an Arecont Vision camera will ensure outstanding observation with excellent color sensitivity and high resolution.

**FULL VIEW IN ALL DIRECTIONS:** Camera can be rotated a full 360° horizontally and 0-90° vertically, allowing full flexibility for either ceiling or wall mounting.

**EASY INSTALLATION:** Easy installation and superior design, perfect for indoor applications.



### MODEL NUMBER

**Dome 5-I**  
Indoor 5 inch recessed dome



### MECHANICAL

**Bubble Diameter:**  
5 inch (127 mm)

**Dust Protection cover box:**  
Length: 8 inch (203 mm)  
Width: 4.5 inch (114 mm)  
Height: 3 inch (76 mm)

**Housing Height:**  
3 inch (76 mm)

**Dome Height:**  
2.80 inch (70 mm)

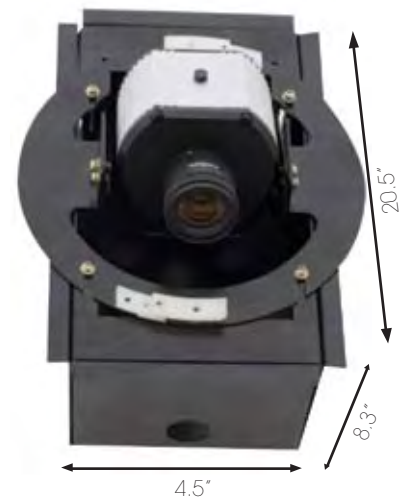
**Housing Diameter:**  
7 inch (178 mm)

### ENVIRONMENTAL

**Operating Temperature:**  
0°C to 50°C

**Humidity:**  
0 to 95 % relative, non-condensing

**Enclosure Protection:**  
Indoor Only





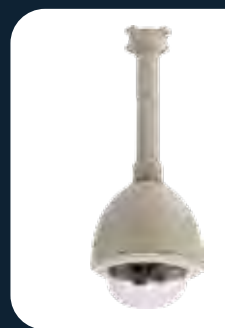
# Arecont Vision

Megapixel IP Cameras

The Arecont Vision 6 inch Indoor/Outdoor Dome is a high quality environmental housing designed for the AV8180 and AV8360 Panoramic 8 megapixel IP video cameras.

Combining this 6" housing with the superior imaging of an AV camera provides the perfect solution for applications in which additional protections from the elements is required. Heater blower and sunshade are also available for extreme environments.

- IP66 Rating
- Indoor or Outdoor Applications
- Wall Mount/Pendant Mount
- Simple Installation
- Easy Access to Camera



**EXCELLENT PROTECTION:** Heavy duty enclosure features an IP66 rating for applications in harsh environments.

**FULL VIEW IN ALL DIRECTIONS:** Use the AV8180 or AV8360 panoramic cameras to ensure outstanding observation with excellent color sensitivity and high resolution.

**EASY INSTALLATION:** Easy installation and superior design, perfect for either indoor or outdoor applications.

## MODEL NUMBERS

### DOME6-I-C:

Indoor 6" vandal resistant dome (AV8XXX)  
Top mount version

### DOME6-I-W:

Indoor 6" vandal resistant dome (AV8XXX)  
Wall mount version

### DOME6-O-CH:

Outdoor 6" vandal resistant dome (AV8XXX)  
w/heater blower, sunshade, top mount, IP66

### DOME6-O-WH:

Outdoor 6" vandal resistant dome (AV8XXX)  
w/heater blower, sunshade, wall mount, IP66

## MECHANICAL

### Housing material:

Aluminum

### Dome Cover Protection:

Vandal resistant polycarbonate

### Color

Gray

### Dome Diameter:

6 in (same for indoor & outdoor)

### Housing Height:

Indoor: 6.3in (160 mm)  
Outdoor: 6.4in (162 mm)

### Housing Diameter:

Indoor: 8.6in (218 mm)  
Outdoor: 9.3in (236 mm)

### Weight w/o camera:

Indoor housing: 570 g (1.26 lbs)  
Outdoor housing: 590 g (1.30 lbs)  
Pendant bracket: 680 g (1.50 lbs)  
Wall mount bracket: 980 g (2.16 lbs)

## ELECTRICAL

### Power Supply:

Indoor: Not Applicable  
Outdoor: 24 VAC Heater/ blower .8A

### Power Consumption:

Indoor: Not applicable  
Outdoor: 20 Watts maximum

## ENVIRONMENTAL

### Operating Temperature:

Indoor: 0°C to 50°C  
Outdoor: - 40 °C to 50 °C

### Humidity:

0 to 95 % relative, non-condensing

### Enclosure Protection:

Indoor: Not Applicable  
Outdoor: IP66 Outdoor Protection Grade

### Fan:

Indoor: Not Applicable  
Outdoor: Fan Operates Continuously

### Heater:

Indoor: Not Applicable  
Outdoor: Heater auto starts when  
temperature drops below to -5 °C

